

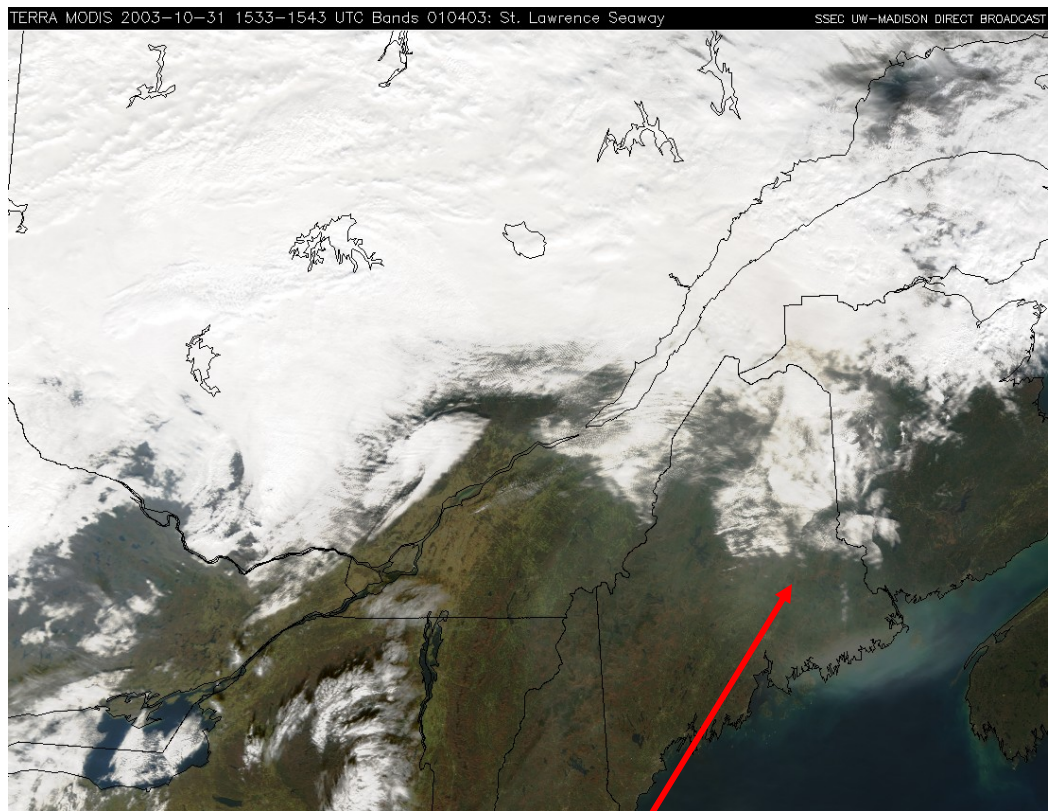
Long Range Transport of California Wildfires to NE US detected by GLAS and MODIS

J. Engel-Cox^{a,b}, R.M. Hoff^b, E.J. Welton^c

^a Battelle Memorial Institute, Arlington, VA

^b University of Maryland, Baltimore County

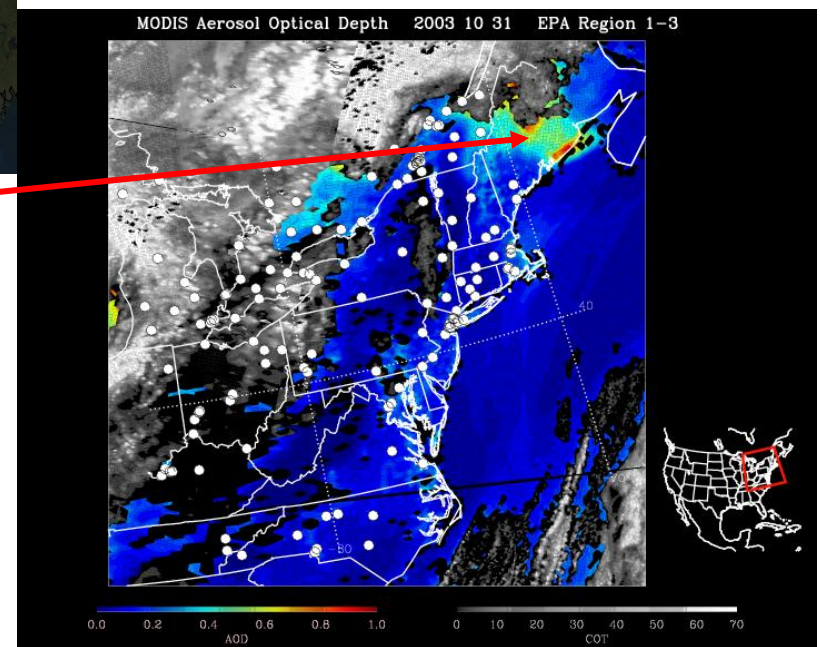
^c Goddard Space Flight Center, Greenbelt, MD



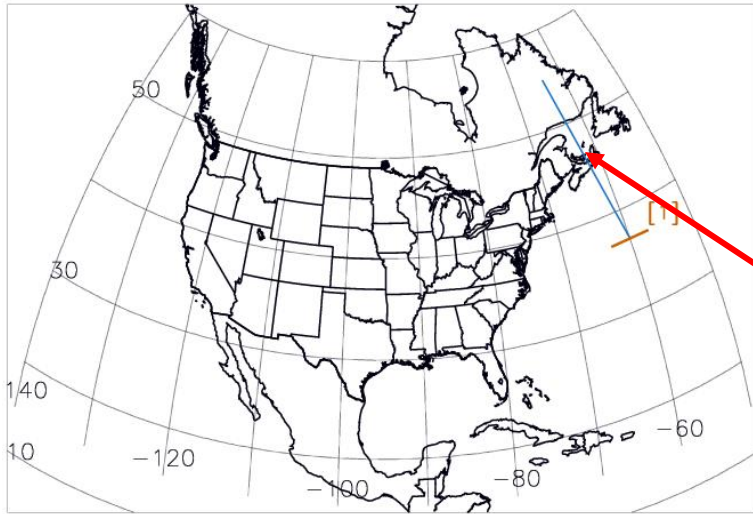
October 31, 2003
Bay of Fundy region
TERRA MODIS RGB

TERRA MODIS Optical Depth

Aerosol over clouds
OD 0.6-0.8

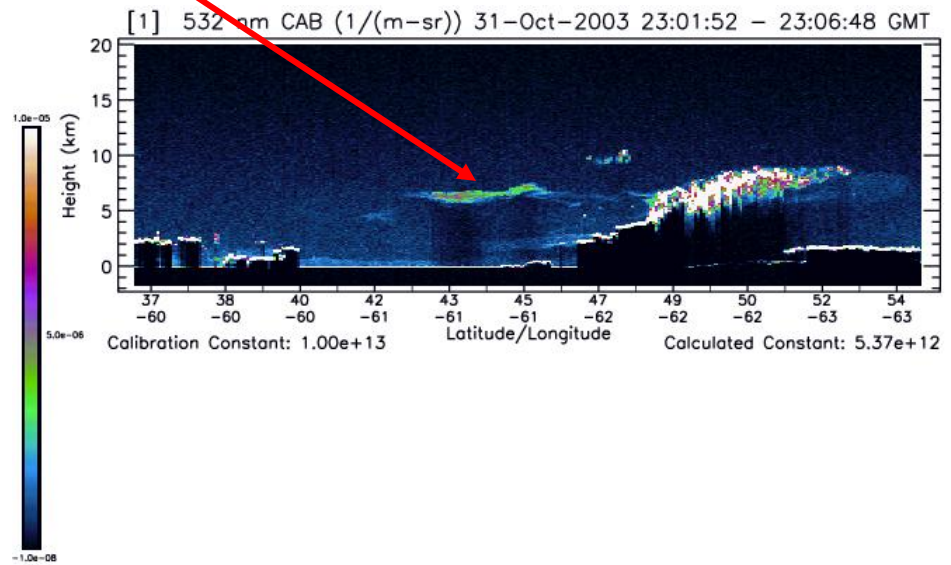


31-Oct-2003 23:01:52 - 23:06:48 GMT

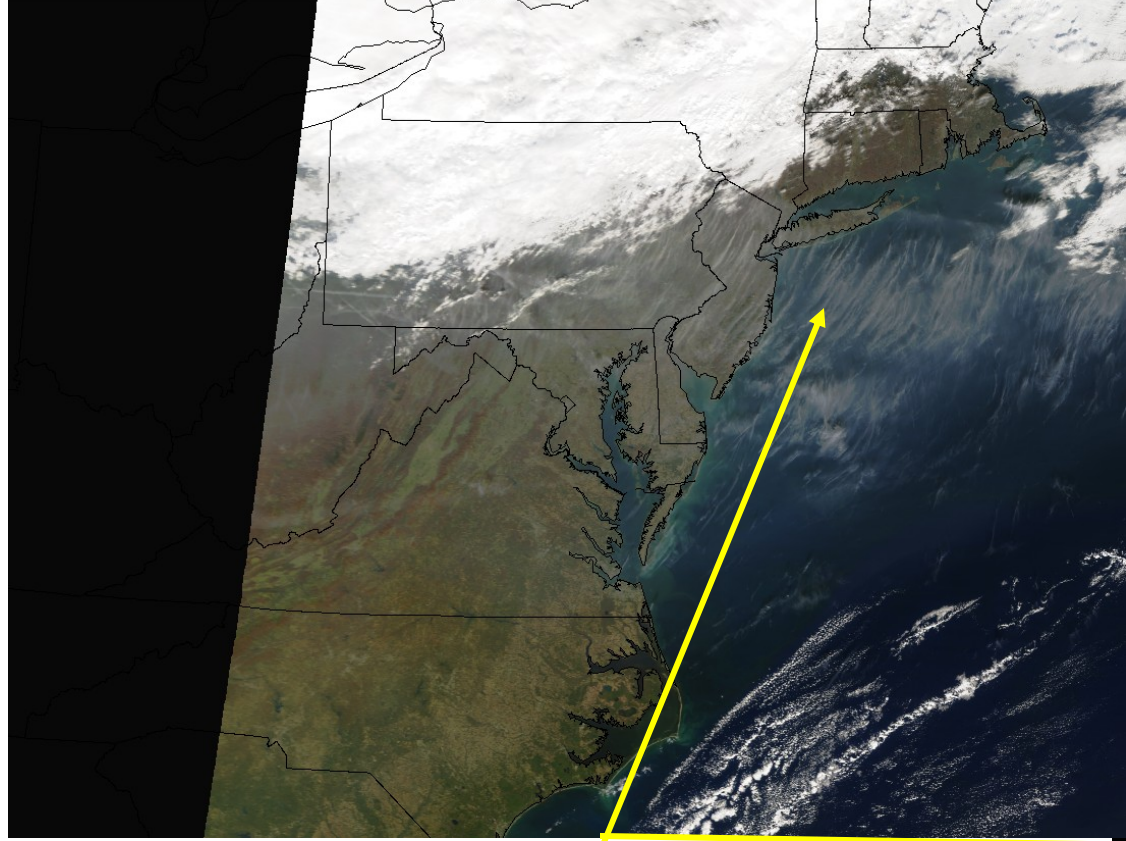


GLAS 532 nm real-time quicklook

October 31, 2003



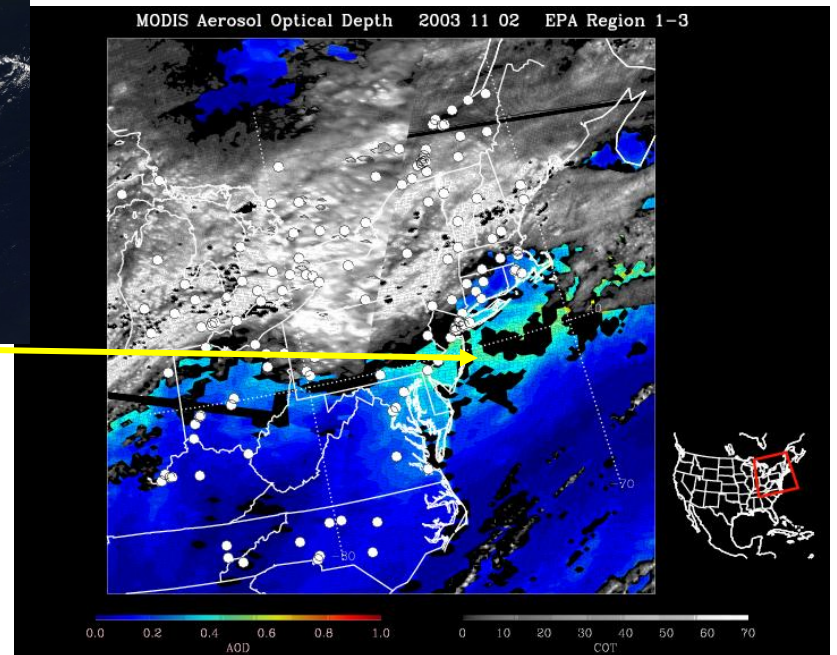
TERRA MODIS 2003-11-02 1521-1530 UTC Bands 010403: Washington DC SSEC UW-MADISON DIRECT BROADCAST



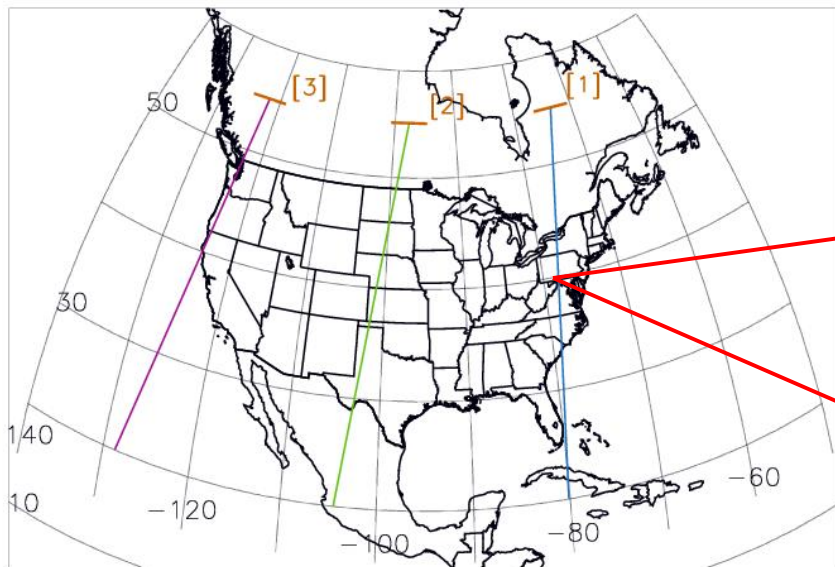
November 2, 2003
Eastern Seaboard
MODIS TERRA RGB

MODIS Optical Depth

Highly structured aerosol
Optical depth ~ 0.4

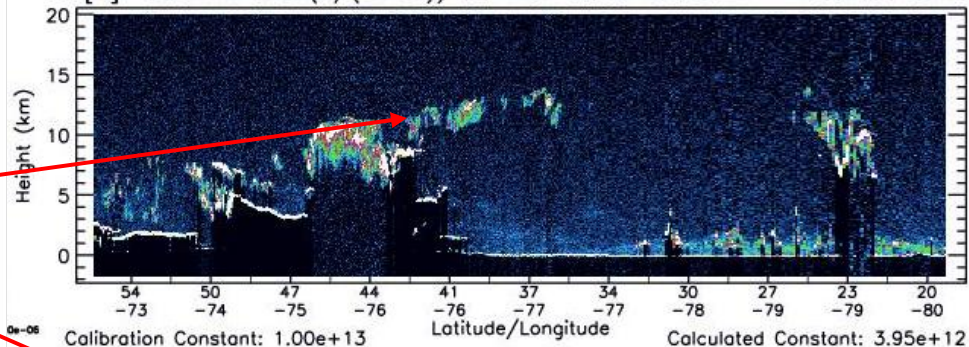


02-Nov-2003 12:28:17 - 15:50:59 GMT

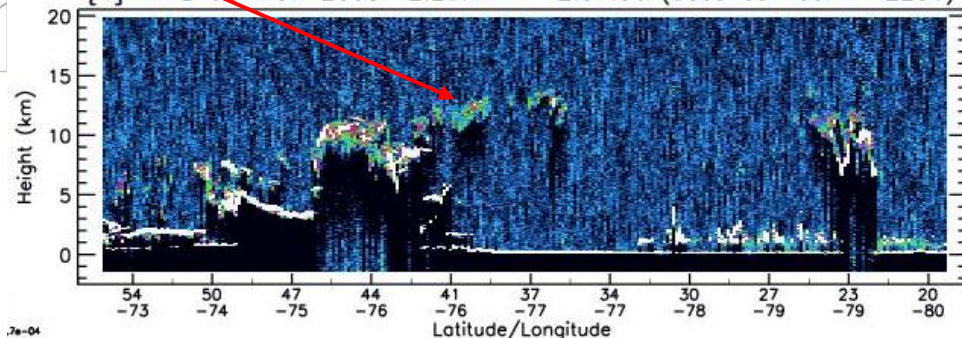


GLAS 532 nm

[1] 532 nm CAB (1/(m-sr)) 02-Nov-2003 12:28:17 - 12:37:36 GMT



[1] NRB 02-Nov-2003 12:28:17 - 12:37:36 (Seconds 1697 - 2256)



We believe that the aerosol feature at 10-13km to the south of the cloud deck is smoke aerosol from California

GLAS 1064 nm

More examples

- Several other examples of MODIS detection of the LA area fires as the plumes crossed the US are available on the USAirQuality weblog (<http://alg.umbc.edu/usaq>)
- The coincident use of GLAS and MODIS allows confirmation that the smoke plumes were lofted to high altitudes ($>10\text{km}$) and travelled above cloud systems in the US