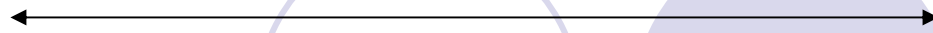


St. Louis Efforts to Reduce Diesel Emissions



Emily Andrews

St. Louis Community Air Project

St. Louis Assoc. of Community Organizations

(314) 533-9104 x 205

www.stlcap.org



St. Louis Efforts to Reduce Diesel Emissions:



- ☆ Background
- ☆ Timeline & Projects
- ☆ Barriers & Lessons
- ☆ Next Steps, Partners
- ☆ Contact Information

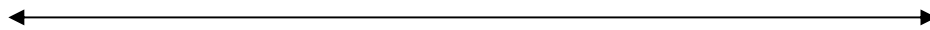


St. Louis Efforts to Reduce Diesel Emissions: Timeline & Projects



- Convened stakeholders to determine best use of ADM funding, June 2003
- Application to retrofit school buses with DOC's, July 2003
- 13 districts participating
- 400 buses retrofitted
- Will retrofit 800 buses by end of project

St. Louis Efforts to Reduce Diesel Emissions: Timeline & Projects



- Idle reduction outreach began fall 2004



- Busses & Beans fall 2004 – sponsored by Clean Cities
- Idle Free Schools Campaign – all schools Idle Free by 2007!

St. Louis Efforts to Reduce Diesel Emissions: Timeline & Projects

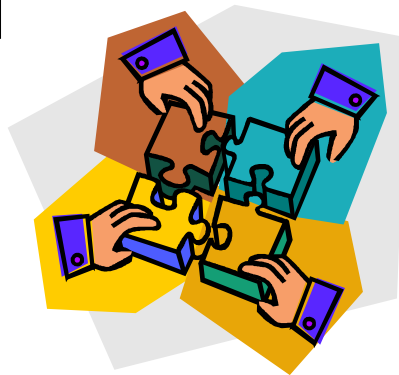


- ALA of MO received EPA Voluntary Diesel Retrofit Grant for Sensitive Populations, February 2005

- Project will retrofit 44 trash trucks in the City of St. Louis with DOCs and crank case controls

St. Louis Efforts to Reduce Diesel Emissions: Barriers & Lessons

- Coordinating numerous parties
- Limited applications to Toyota SEP or Clean School Bus USA
- Communication is key
- Build more time into process than you think you need



*St. Louis Efforts to Reduce
Diesel Emissions: Next Steps, Partners*

A decorative graphic at the top of the slide features five circles of varying shades of light purple and white, arranged in a horizontal line. Below the circles is a horizontal double-headed arrow pointing left and right.

Key Partners

Schools Districts

City of St. Louis

St. Louis CAP/SLACO

American Lung Assoc. of MO

American Bottom Conservancy of IL

Grace Hill Settlement House/
North Side Clean Air Project



*St. Louis Efforts to Reduce
Diesel Emissions: Next Steps, Partners*

Key Partners

St. Louis Regional Clean Cities Coalition
East West Gateway Council of Governments

RegionWise

Archer Daniels Midland

U.S. EPA

MO DNR

IL EPA

St. Louis Efforts to Reduce Diesel Emissions: Next Steps, Partners

Contact Information



St. Louis CAP

Emily Andrews, (314) 533-9104

www.stlcap.org



ALA of MO

Susannah Fuchs, (314) 645-5505

sfuchs@lungmo.org