

# Model Clearinghouse Status and Update

Dennis Atkinson\*

NOAA, Applied Modeling Branch

\*in partnership with US EPA, OAQPS

Research Triangle Park, NC

# Outline

- Model Clearinghouse Function
- Model Clearinghouse Activities
- New Activities
- MCHISRS

# Model Clearinghouse Function

- Purpose: A process and mechanism whereby an EPA Regional Office can obtain EPA Headquarters concurrence on implementation issues related to air quality modeling.
- Appendix W, Section 3.3(b): “As appropriate, the Regional Office may request assistance from the Model Clearinghouse after an initial evaluation and decision has been reached concerning the application of a model, analytical technique or data base in a particular regulatory action.”

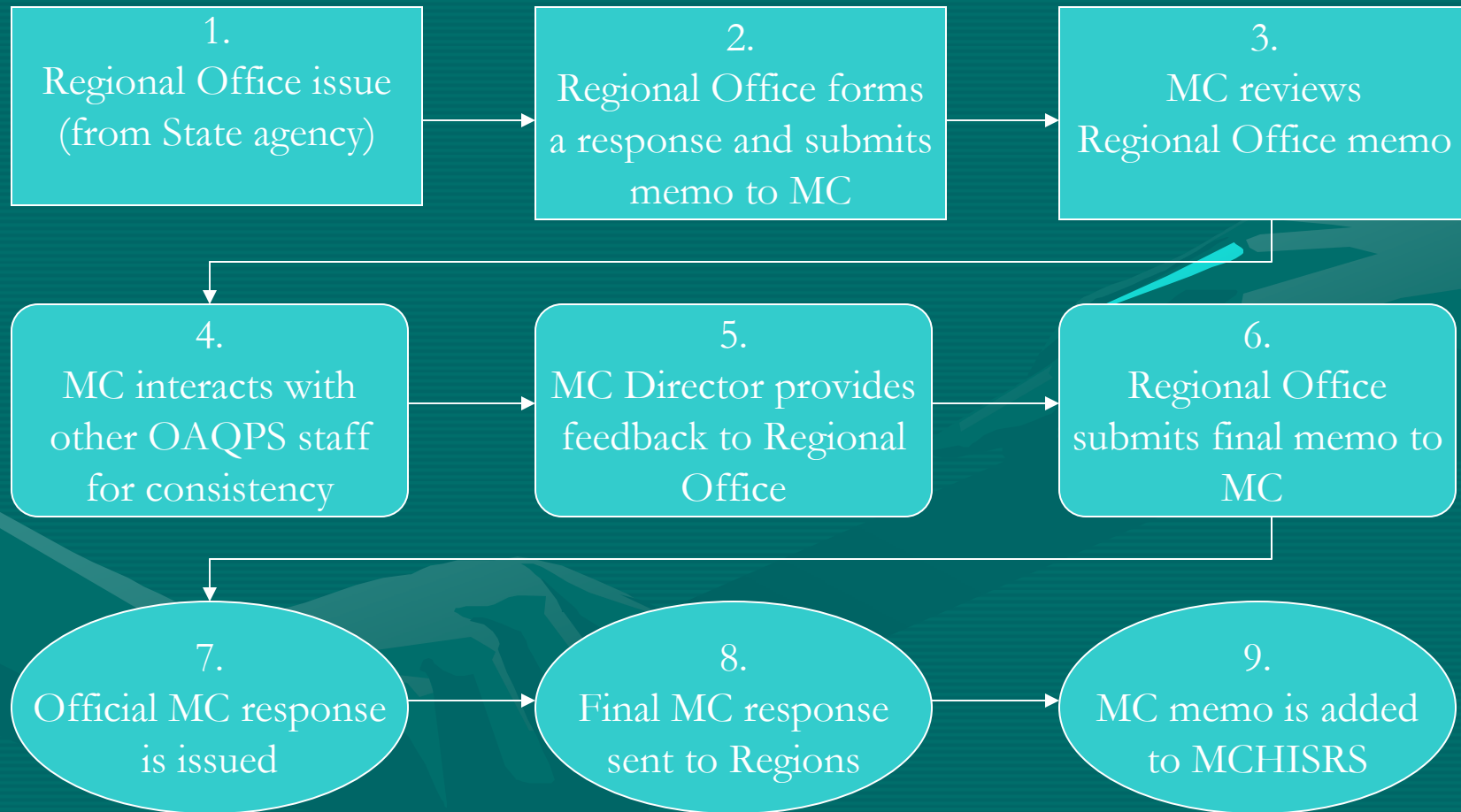
# Model Clearinghouse Function

1. Issue arises at the Regional Office level (forwarded from State)
2. Regional Office formulates a response and submits to the MC Director
3. MC reviews the Regional Office memo
4. MC interacts with other OAQPS staff to ensure consistency
5. If needed, MC Director provides feedback to Regional Office (multiple iterations)

# Model Clearinghouse Function

6. Regional Office modifies the original memo for submittal to MC on Regional Office letterhead
7. An official response is generated by the MC Director on EPA letterhead
8. Final MC memo (response to Regional Office) is sent via email to all Regional Offices
9. MC memo is recorded to MCHISRS

# Model Clearinghouse Function



# Model Clearinghouse Function

- Two types of issues (and variations thereof)
  - Technical -- response provided by AQMG and other technical experts
  - Policy -- response provided by primarily by Air Quality Policy Division (Bill Harnett), along with AQMG

# Model Clearinghouse Function

- MC requests and responses
  - Informal – trackable requests for clarification on issues; no MC memo issued
  - Formal – formal Regional Office memo sent to MC with desired approach and justification of issue; requires formal MC memo response

# Model Clearinghouse Activities

- Dennis Atkinson – MC Director after Warren Peters retired; effective February 7, 2006
- MC Memorandum #1
  - submitted by Region 4...February 23, 2006
  - regulatory use of CALPUFF; P-G vs. turbulence dispersion for BART modeling
  - since regulatory default of EPA approved CALPUFF is P-G, this method was deemed appropriate
  - regulatory-approved algorithms within 1 model can not be automatically transferred to other models for regulatory use
  - issued on March 16, 2006
  - MC memo posted to SCRAM, along with original memo and CALMET/CALPUFF defaults

# Model Clearinghouse Activities

- MC Memorandum #2
  - request from State of Iowa to Region 7
  - formally responded to by AQMG staff, via the Model Clearinghouse
  - implementation issues associated with AERMET and ISH (Integrated Surface Hourly) data, between original TD-3505 format (Oct. 2000) and a newer version (Feb. 2002)
  - MC memo issued on May 12, 2006
  - memo will be posted on SCRAM after workshop

# New Activities

1. Periodic call to RO modelers
  - each Region will be called during a 2-week period; 2 calls for each RO/month
  - summary of potential issues during each call will be captured
2. Periodic checks of the SCRAM “public forum” for AERMOD & CALPUFF issues
  - check for reoccurring issues or problems
  - these issues/problems will be noted and follow-up action taken (user’s guide changes and/or guidance)

# New Activities

## 3. MCHISRS (Model ClearingHouse Information Storage and Retrieval System)

- historical database of past formal and informal MC responses
- currently available on SCRAM in the Modeling Guidance and Support area ...

[http://www.epa.gov/scram001/guidance\\_clearinghouse.htm](http://www.epa.gov/scram001/guidance_clearinghouse.htm)

- searchable by topic, pollutant, RO, date, etc.
- provides quick reference for Regional Office, as well as other modelers
- currently undergoing reconstruction; work in progress

# MCHISRS - Features

## End-User features

- Search via Lotus Notes (EPA only)
- Web Accessible (Internet / EPA Intranet)
- Import of old data (current MCHISRS)
- New feature: Attach files (new records)
- Proposed feature: Upload of old files
- End user documentation

# Features (cont'd)

## Administrative features

- Update /Edit /Delete from Lotus Notes
- No HTML editor needed to modify content
- Data stored in backend relational database
- Administrative documentation – end of quarter, end of year, etc.

# MCHISRS Home Page



About Us

Search Air Pages

U.S. Environmental Protection Agency

## Model Clearinghouse (MCHISRS)

Model Clearinghouse Storage and Retrieval System

[Recent Additions](#) | [Contact Us](#) | [Print Version](#) Search:  [GO](#)

[EPA Home](#) > [OAQPS](#) > [Air Program](#) > [Search](#) > MCHISRS

## Model Clearinghouse Storage and Retrieval System (MCHISRS)

### What is MCHISRS?

An on-line database system designed to help the Model Clearinghouse manage information about referrals from the EPA Regional Offices involving the interpretation of modeling guidance for specific regulatory applications.

The Air Quality Modeling Group (AQMG) of the U.S. Environmental Protection Agency (EPA) is responsible for providing and maintaining air quality models that are acceptable for use in regulatory applications. The Model Clearinghouse resides in AQMG, and is the single EPA focal point for reviewing the use of modeling techniques for specific regulatory applications. Model Clearinghouse recommendations are used routinely by EPA Regional Offices in assisting their States in modeling for State Implementation Plans and for Prevention of Significant Deterioration permits. The Clearinghouse also serves to compile and report Agency decisions concerning deviations from the requirements of the Guideline on Air Quality Models (Revised). States can use this information directly as guidance for their ongoing regulatory modeling activities.

While the system was designed to only assist EPA internally, we believe that it may be useful to the States and private sector modelers to know something about the history of applications, perhaps similar to one they are working on. MCHISRS consists of approximately 1400 records of correspondence and conversations between the Clearinghouse and the Regional Offices.


This page allows you to search the Model Clearinghouse directly.

# MCHISRS Basic Searching

- Searches all fields in the MCHISRS database

**Basic Search**

Text Search

 Search

# MCHISRS Detailed Search (cont'd)

## Detailed Search

### Note:

By default, the search locates documents containing words in the exact order they are typed. When you want documents containing any of several words, use commas to separate them.

For example, typing

`operating permit`

will find any document containing the phrase **operating permit**.

Typing

`operating, permit`

will find documents that contain either **operating** or **permit**.

Finally, typing

`operating and permit`

will find documents containing both **operating** and **permit**, but not in a particular order.

Some documents in the database are a scanned or retyped version of a paper photocopy of the original. Although considerable effort has been expended to quality assure the conversion, some documents may contain typographical errors. To obtain a photocopy of the original document, as it currently exists, the reader should contact the office that originated the correspondence or provided the response.

Text Search fields  Comment  Title

**Subject**

**EPA Region or State**

**Model**

**Terrain**

**Guideline**

# New Activities

4. MC Informal Requests
  - track and respond to informal requests for clarification or issues from ROs
5. MC Formal Requests
  - currently in place (follow earlier outline)
6. Annual MC Report
  - summary of formal and informal MC actions;  
will provide quarterly interim reports to RO modelers



# Questions?

Please provide any comments on the  
U.S. EPA Model Clearinghouse to Dennis Atkinson at [atkinson.dennis@epa.gov](mailto:atkinson.dennis@epa.gov) .